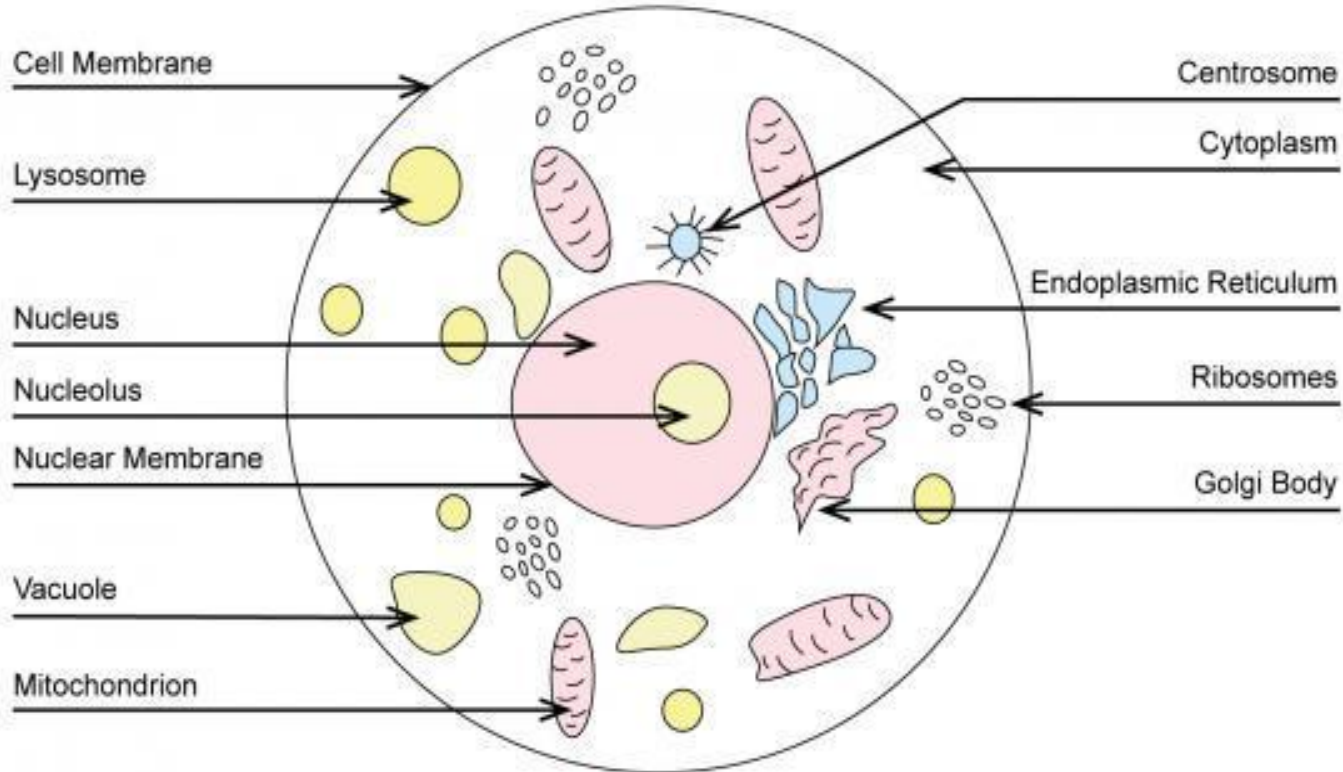


Animal Cell

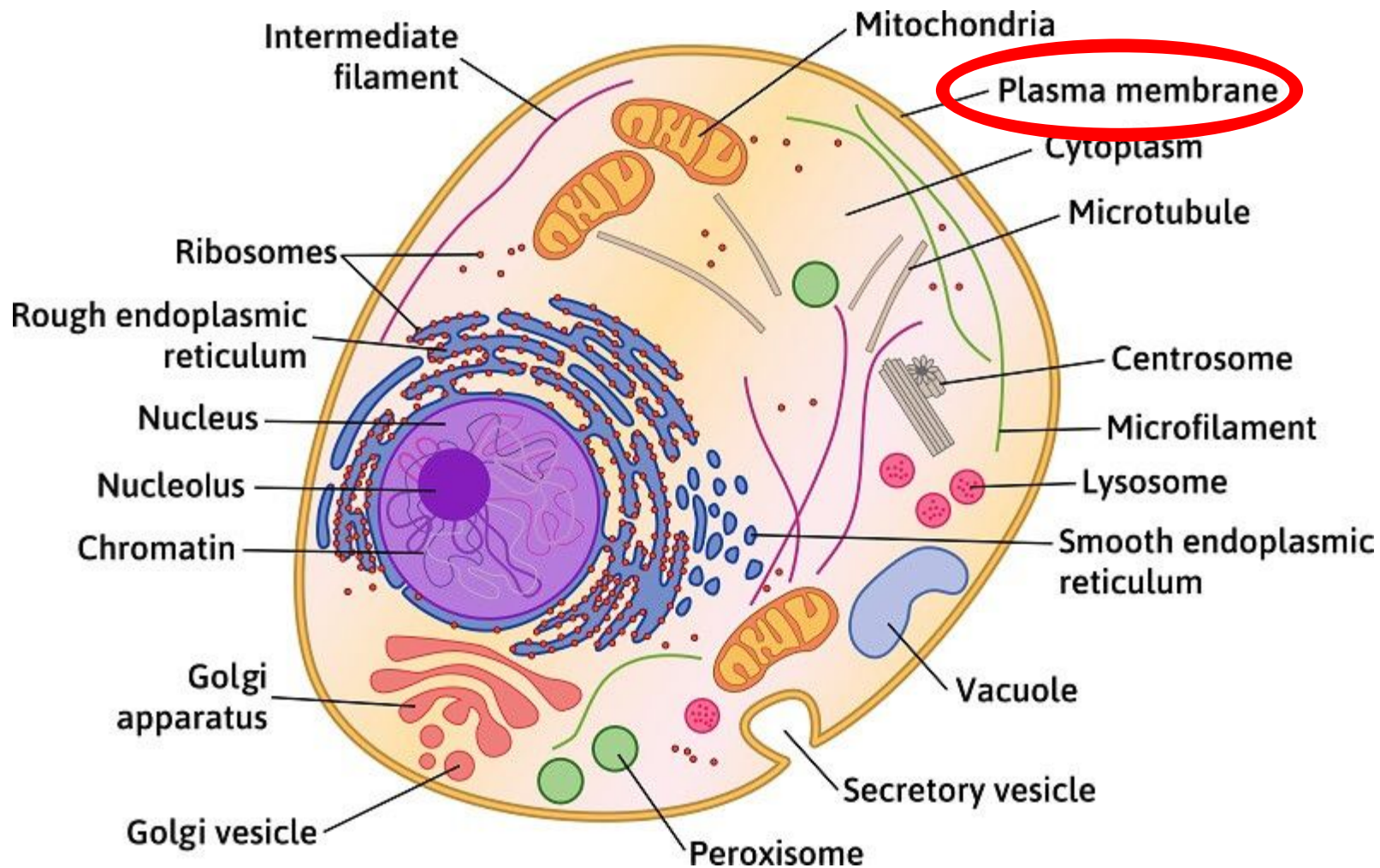




The cell membrane controls what enters and exits the cell like the gate.

Your bowls will represent your cell membrane!

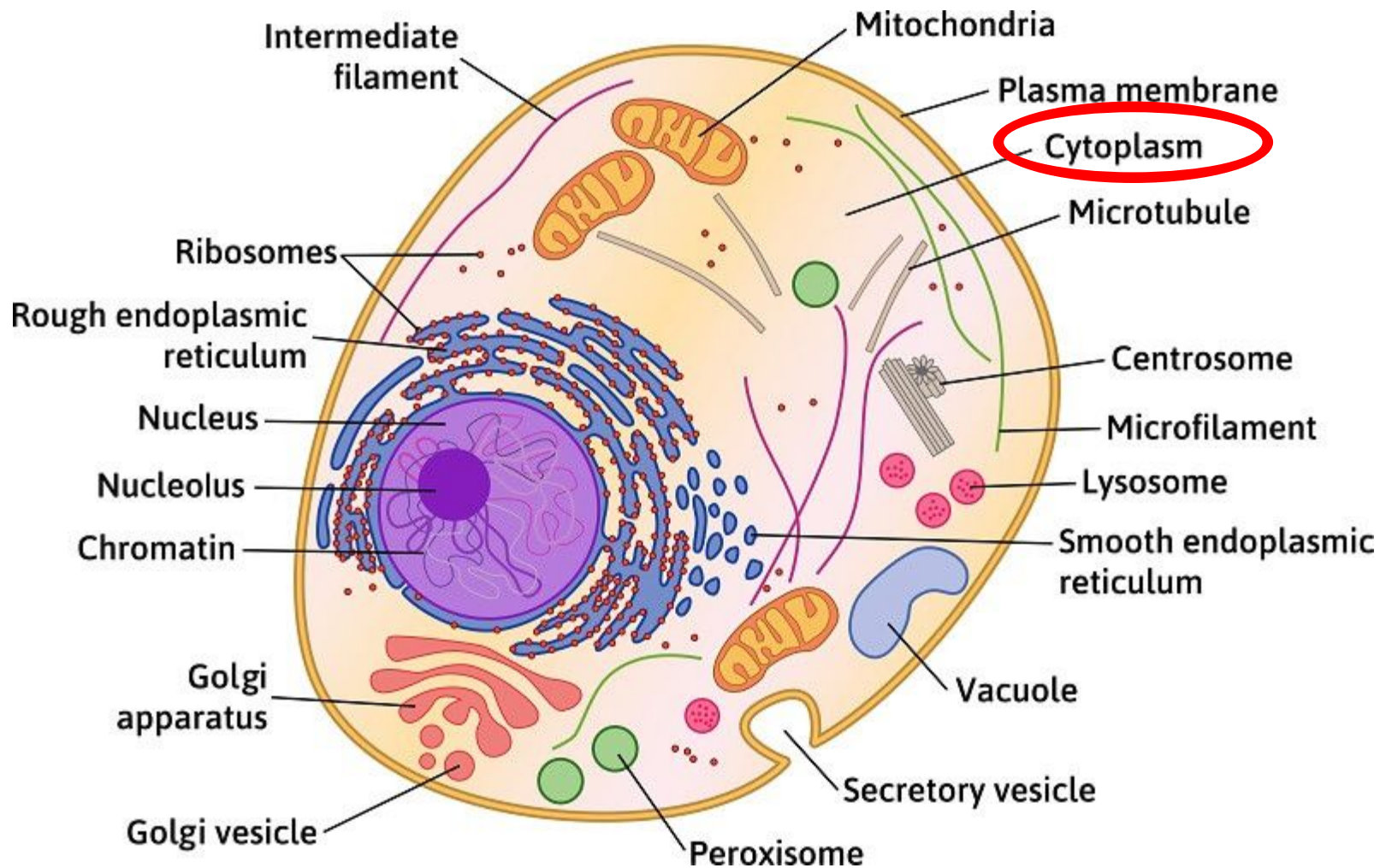




The cytoplasm is like air because it surrounds everything inside of the cell.



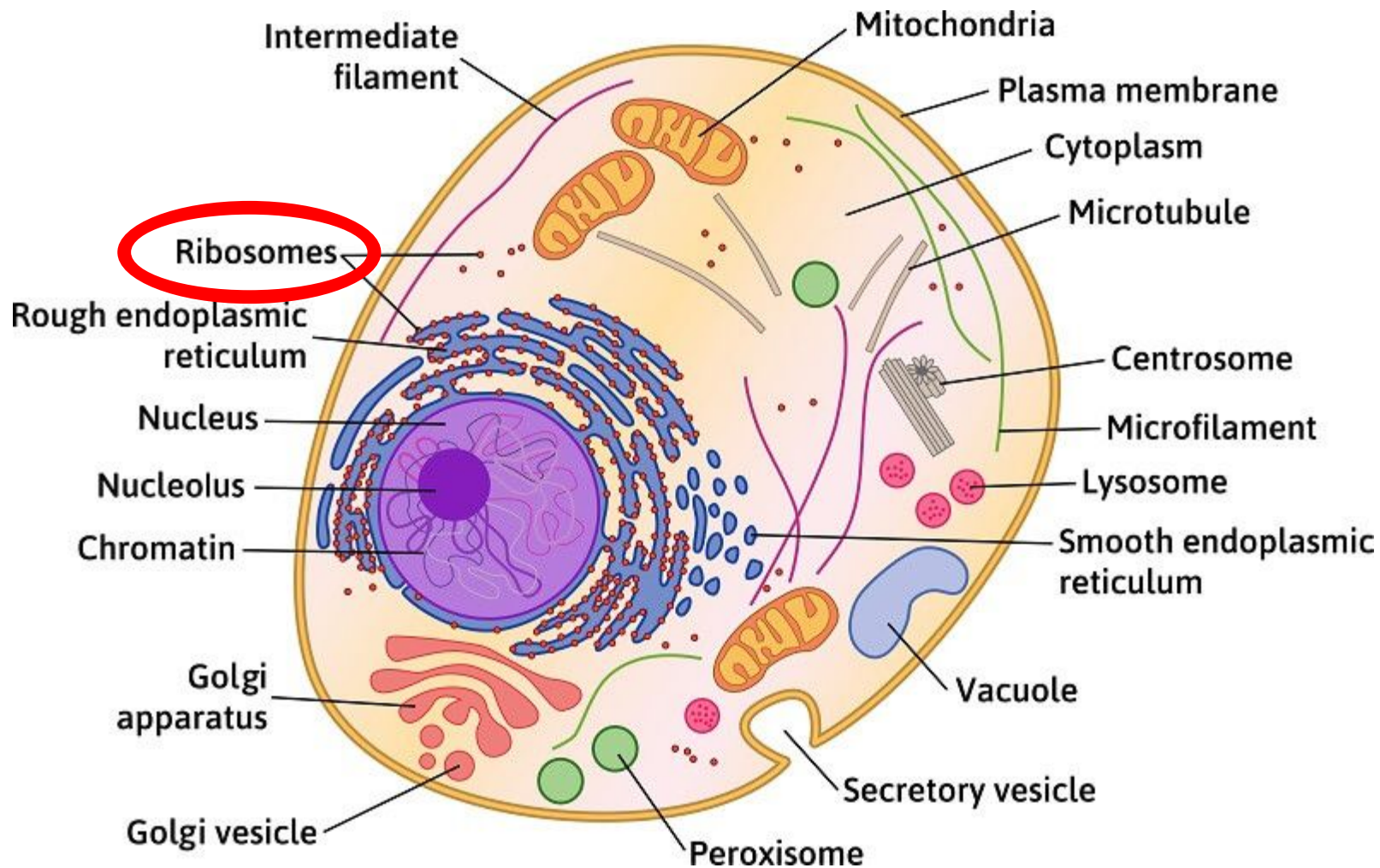
What we'll use - Pudding :) Go ahead and pour your pudding into your bowl!



Ribosomes are like manufacturers because they make proteins for cells the same way the manufacturers build supplies for factories.

What we'll use - Candy Sprinkles! Ribosomes are found all around the cell, so go ahead and spread sprinkles all throughout your pudding!



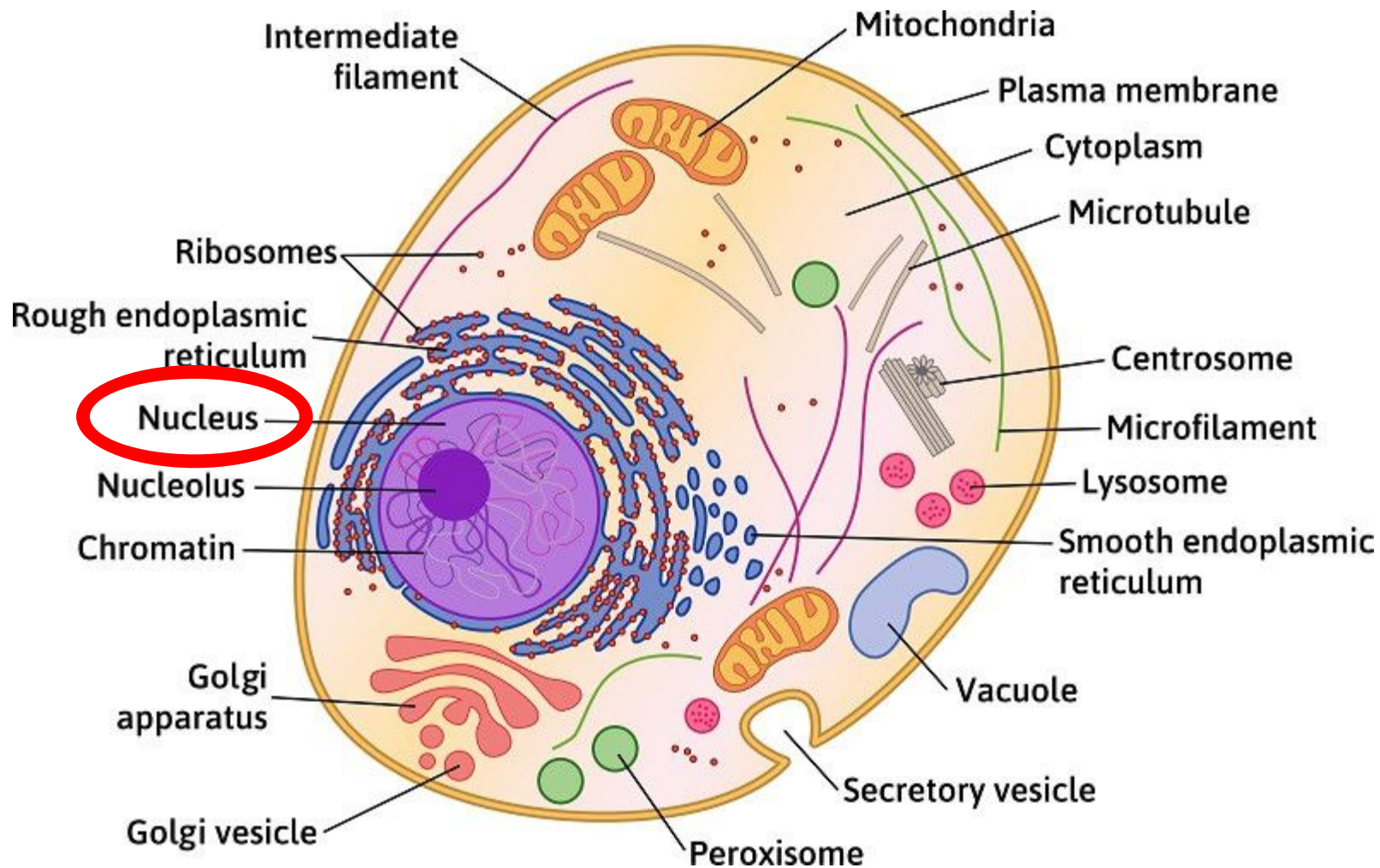


The nucleus is like the city hall of a city, for it controls the cell by sending out important information.



What we'll use - Mentos (1 per student)!

©SCICOVERY



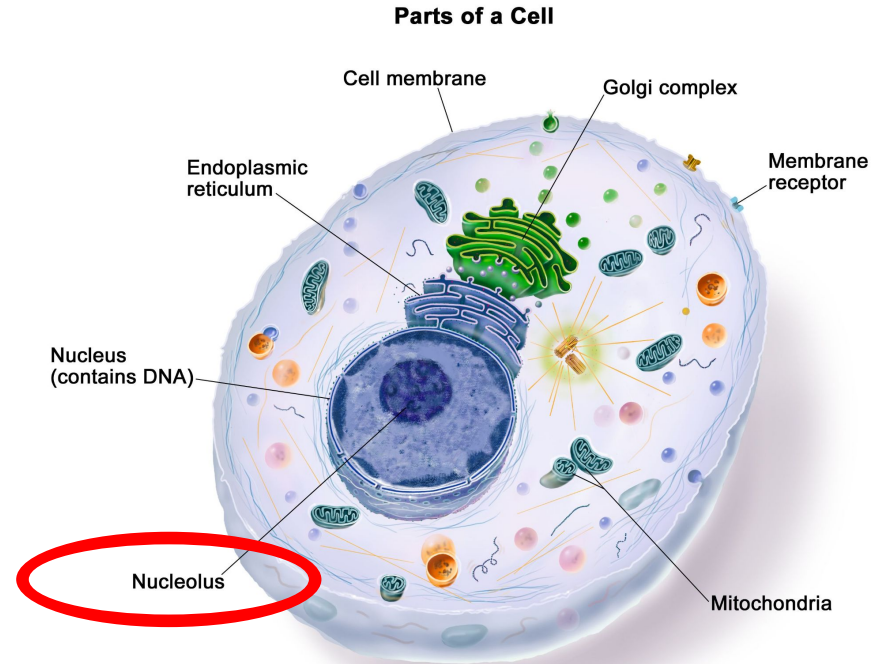
The nucleolus is like the president of our country because it is in charge of the whole cell.

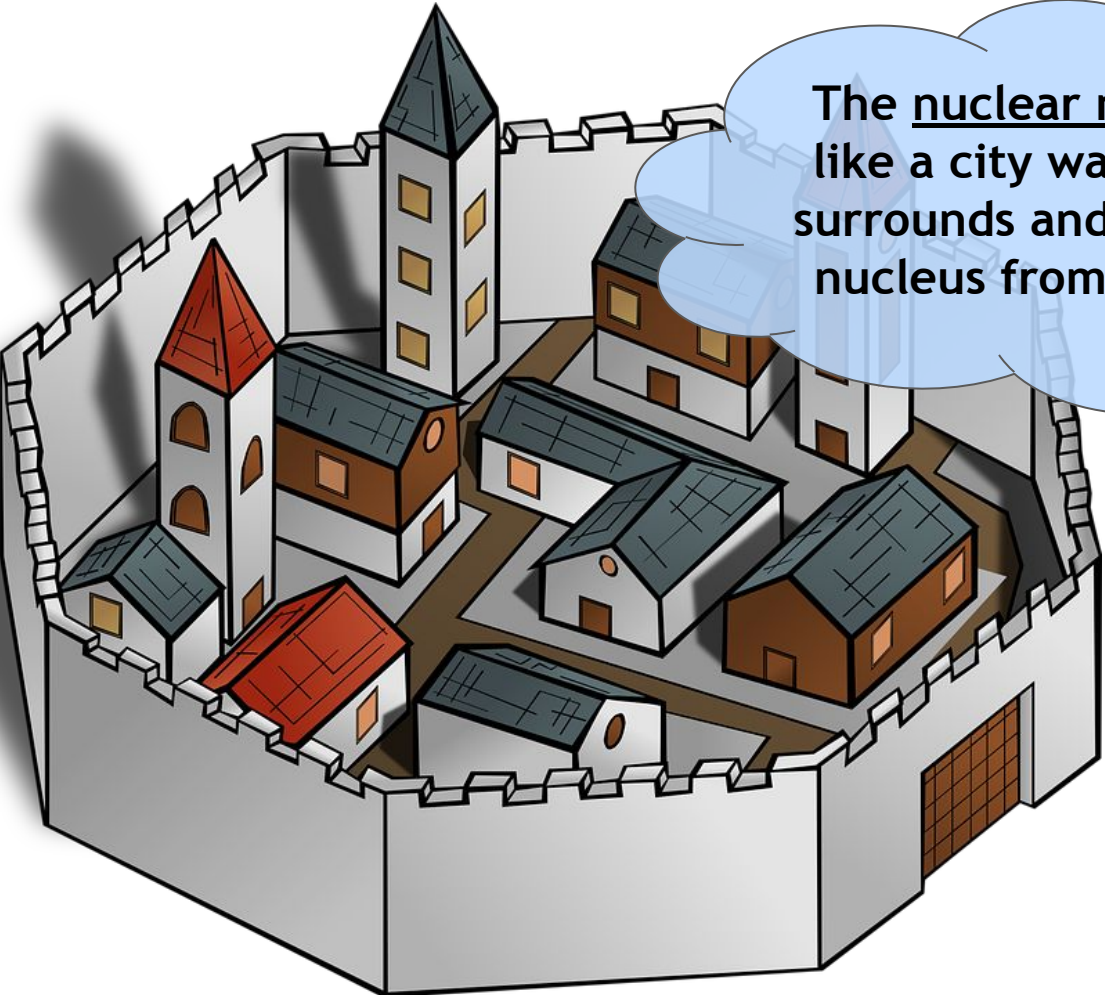


Question Time

Based on the name, what organelle do you think the nucleolus is a part of?

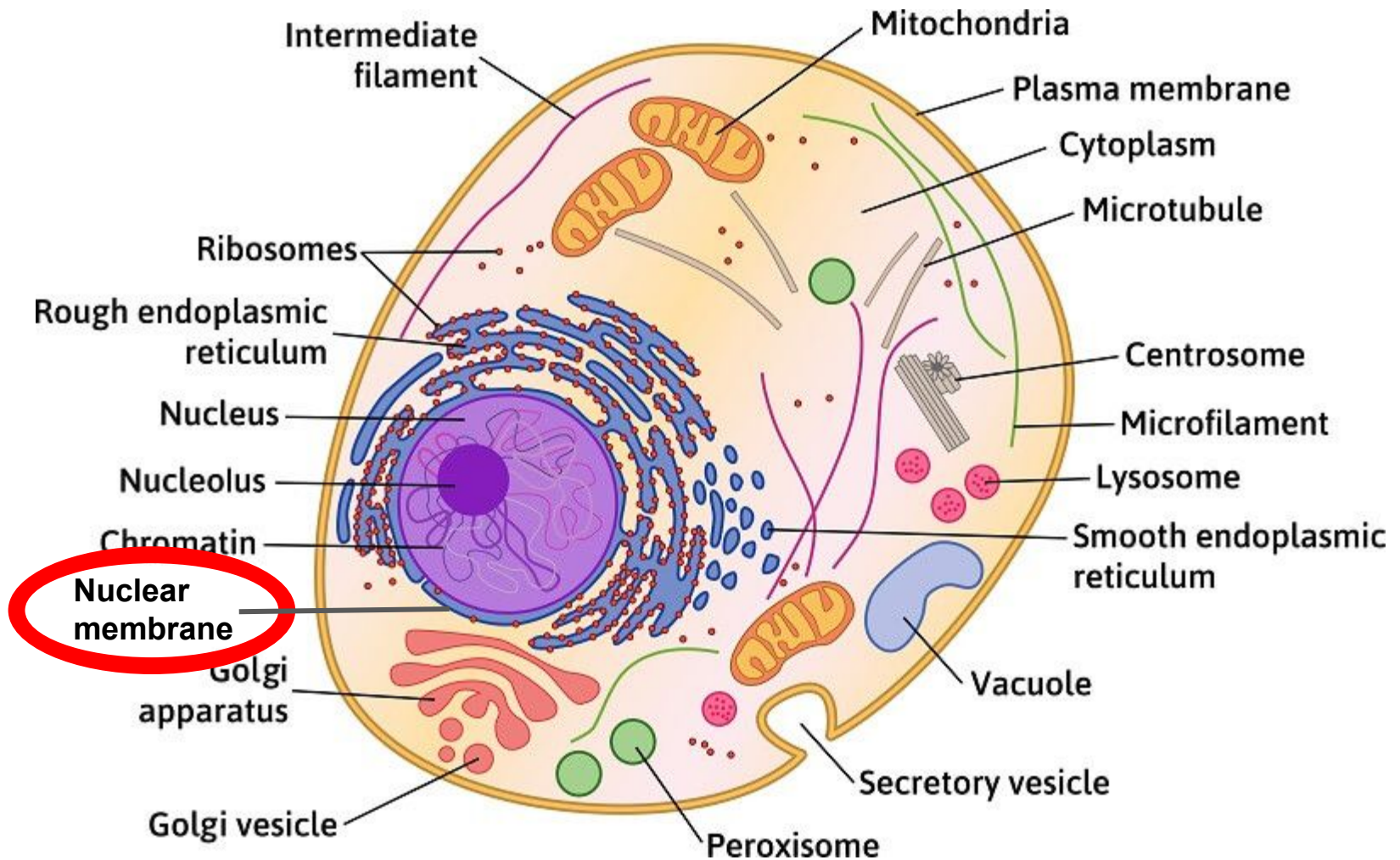
Inside the NUCLEUS!






The nuclear membrane is like a city wall because it surrounds and protects the nucleus from any danger.

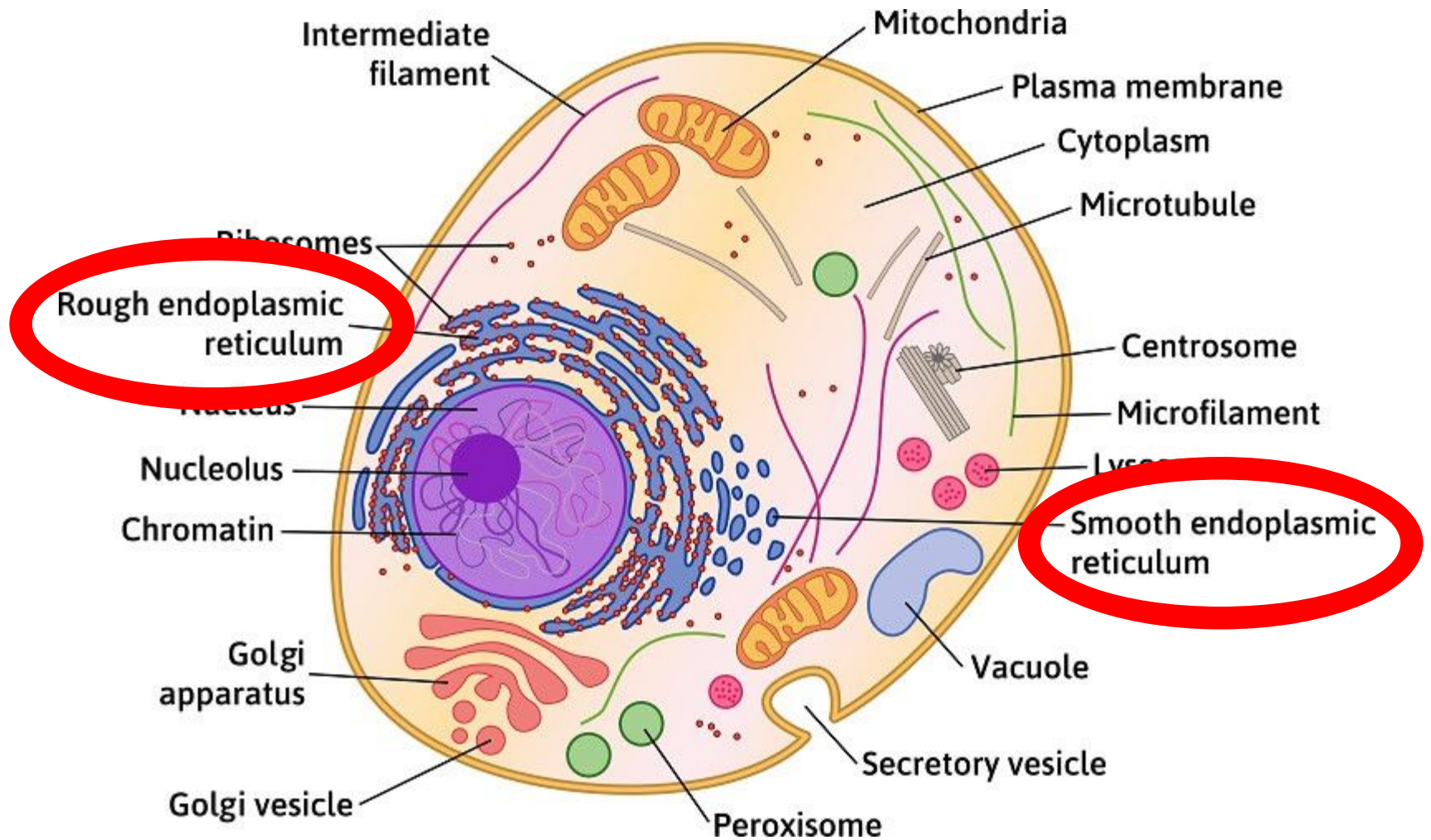




What we'll use - Sour (2 each) + Regular Gummy Worms (2 each)! They are normally found near the nucleus, so put your gummy worms near your nucleus!

A cartoon owl wearing a white lab coat and blue goggles, holding a test tube with green liquid and a beaker with orange liquid. It is standing in front of a stylized factory background with smokestacks and pipes.

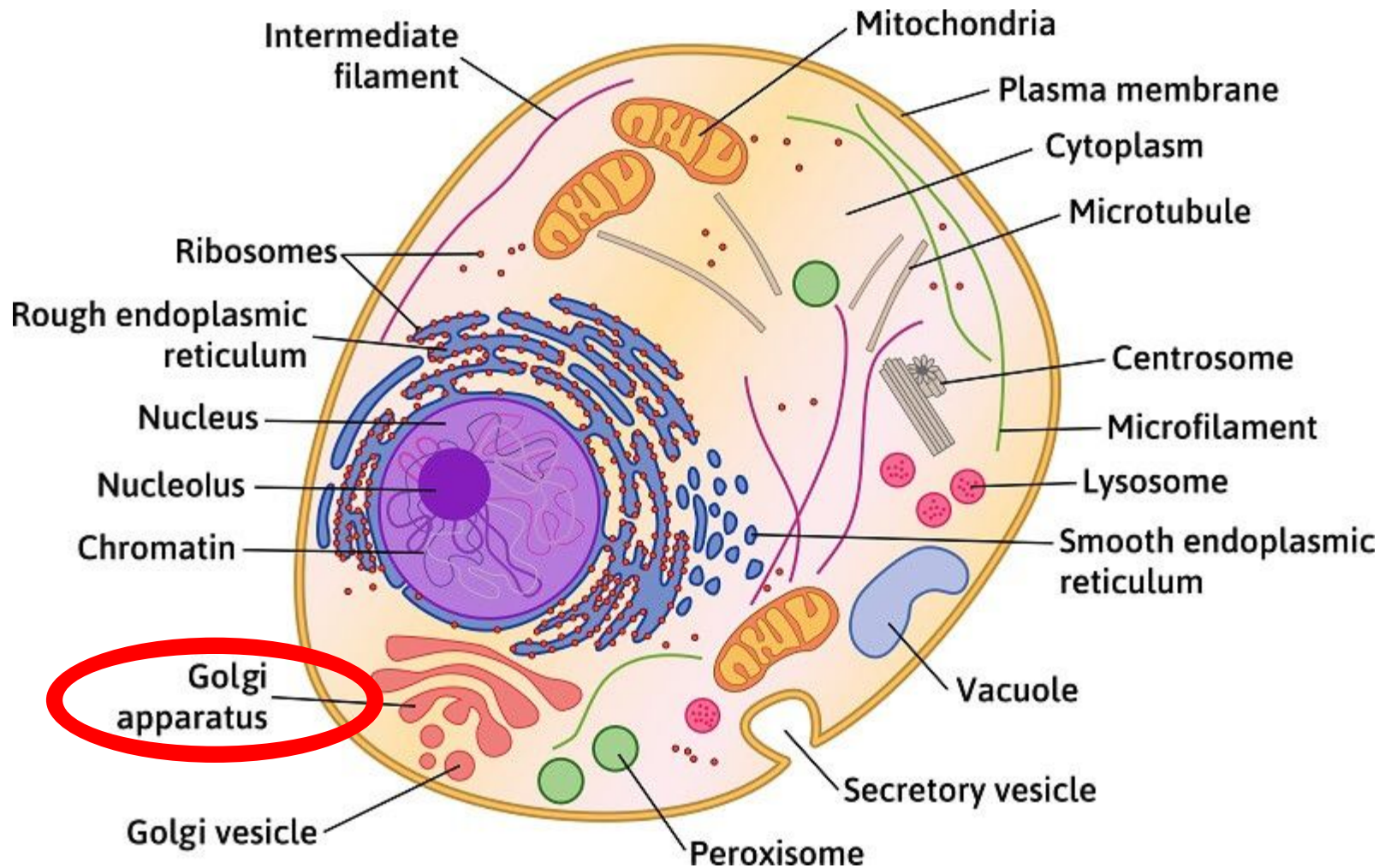
The ER is like a factory because it makes proteins and fats.



The Golgi Apparatus is like a post office because golgi bodies get organized and sent out.



What we'll use - Flat Candy!



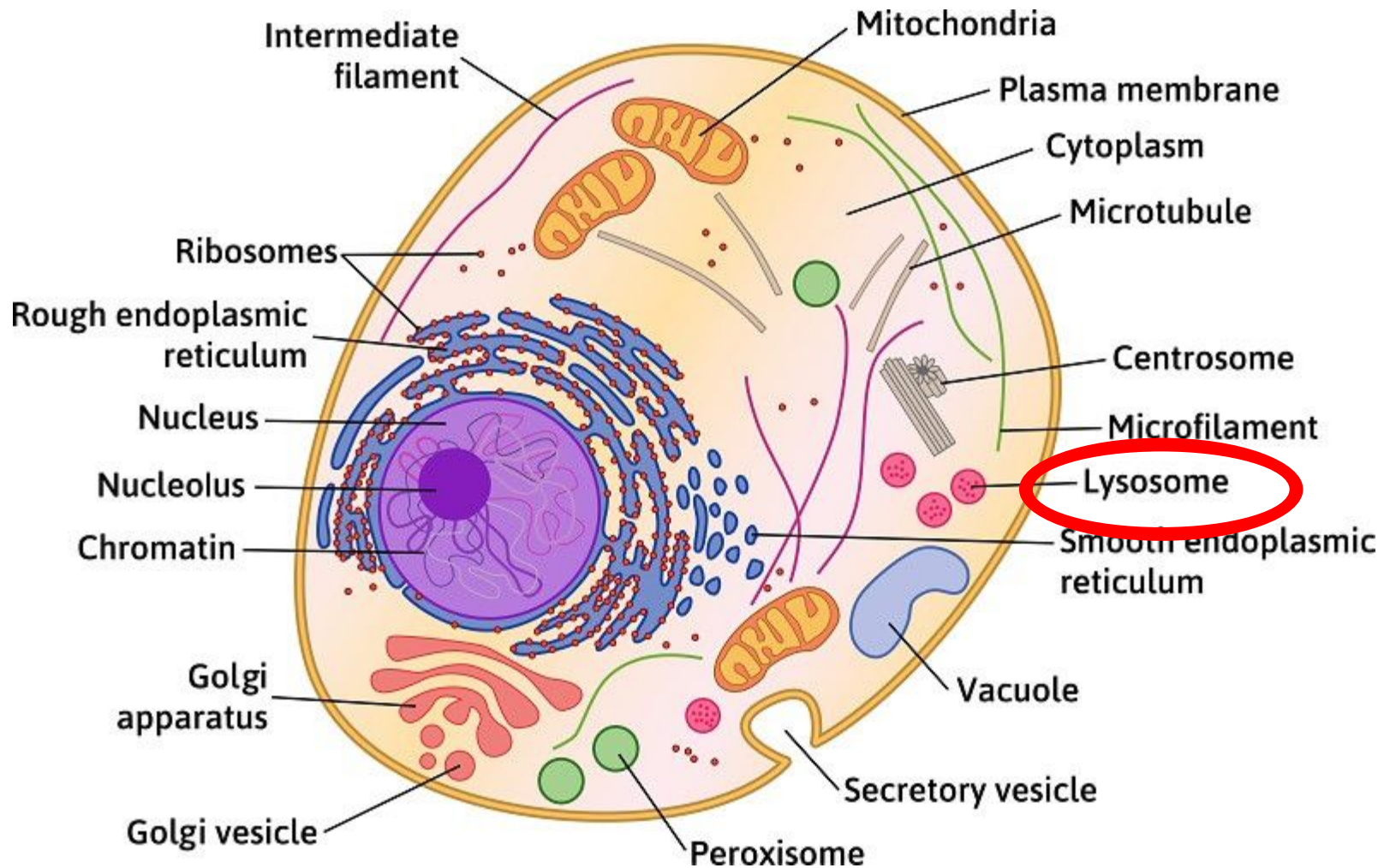


Lysosomes are like garbage disposals because they break down wastes from the cell and then get rid of them by digesting them.



What we'll use - Skittles (5 per student)

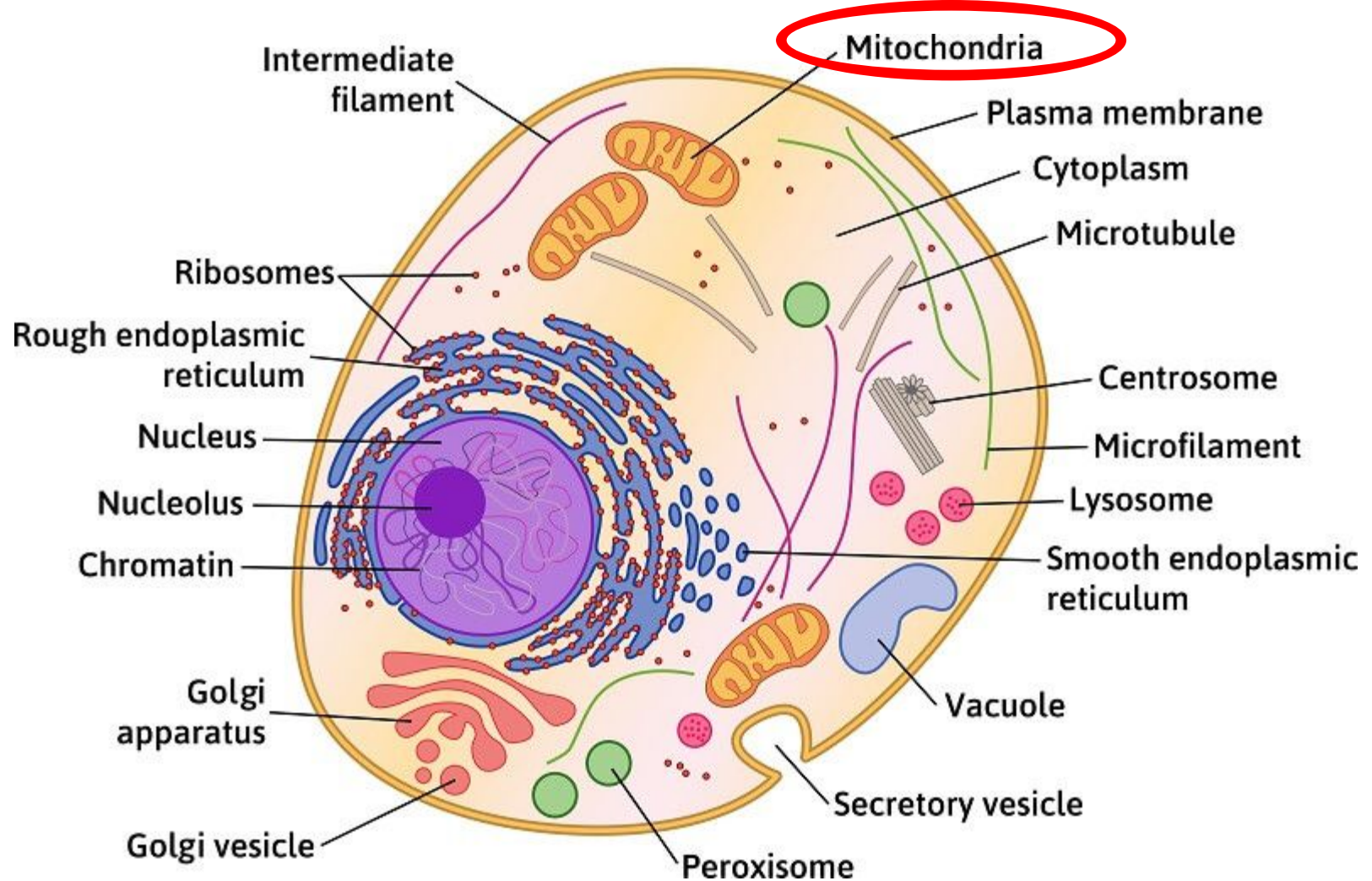
©SCICOVERY



What we'll use - Tootsie Rolls



Mitochondrias are
like power plants
because they provide
energy for the cell.

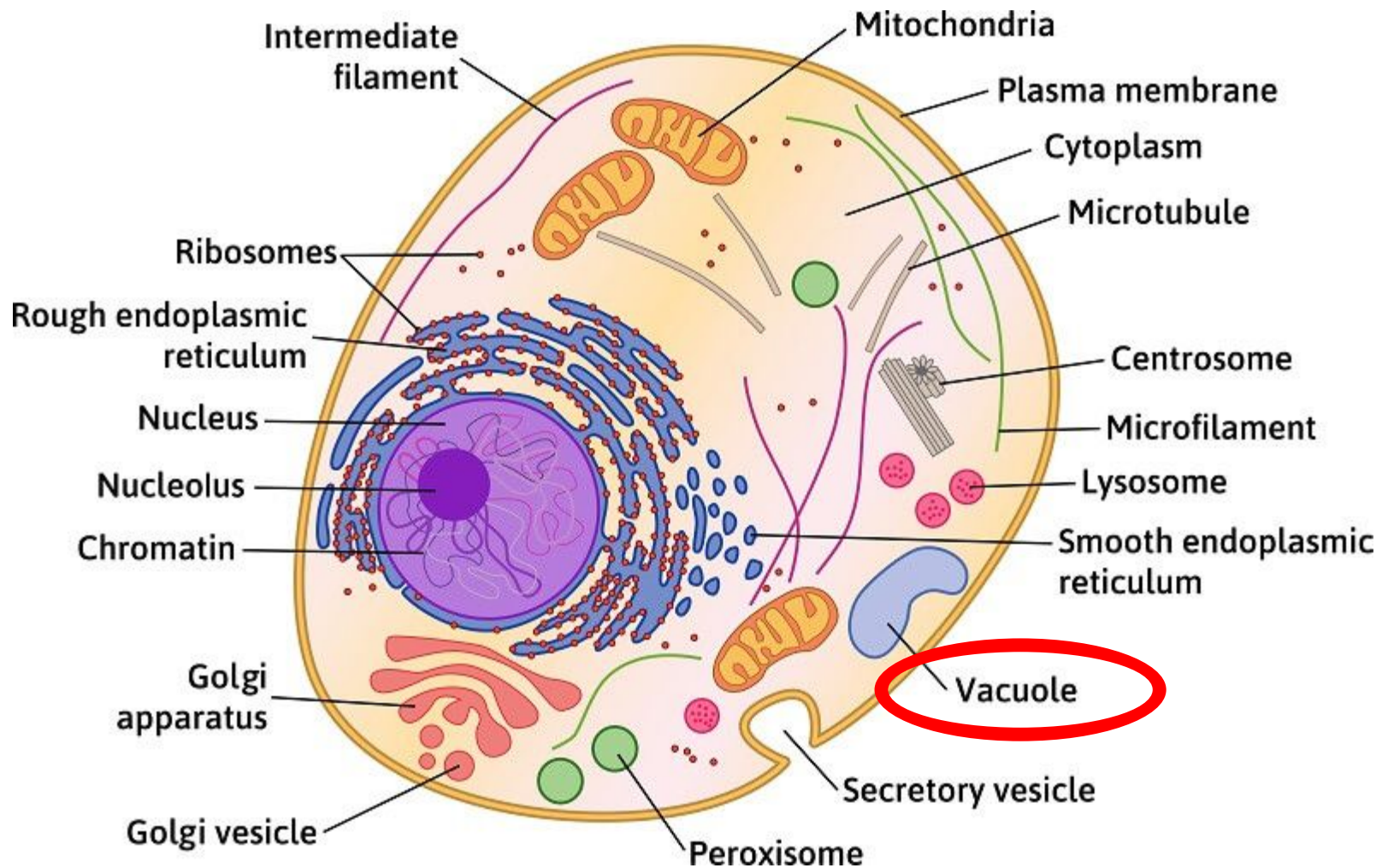


What we'll use - jelly
beans (3 per student)!

Warehouse

Vacuoles are like
warehouses because
they store food,
water, and waste for
the cell.







**Now you should
have your own
edible animal cell
model!**